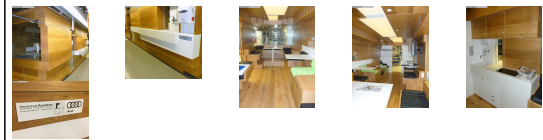
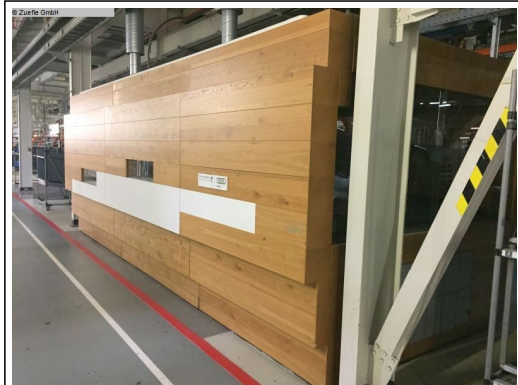


## MACHINE-DATA

Machinetype	: Container
Make	: Universitaet Rosenheim
Type	: Designer-Pavillon
Year	: 2013
Control type	: conventional
Control	:
Storage location	: Stock Giebelstadt
Origin	: Germany
Delivery time	: immediately
Quotation	: ab Standort
Price	: on request



## TECHNICAL DATA

length	716 cm
width	325 cm
height	290 mm
total power requirement	380 V
weight of the machine ca.	8 t
dimensions of the machine ca.	716 x 325 x 290 cm

## TECHNICAL DESCRIPTION

*We offer a mobile employee lounge as a unique item:*

*Design students at the University of Rosenheim built a staff lounge (MILO) for AUDI in 2013. This lounge is built for the indoor area using high quality materials with steel-wood construction. It served the employees as a break room and for meetings.*

*The lounge in wood surface (oak) both inside and outside has 2 access doors and on the front a large glass window. She has several seating areas and a kitchen area with running water / sewage, refrigerator and ceramic hob.*

*Outside there is a sink and on both fronts together 52 lockers.*

*There is a ventilation system, sprinkler system, lighting technology as well as the requirements for connecting a TV. All cabling is running in the control box. Water and sewage connection are integrated.*

*This lounge can be disassembled and transported in 5 units. We brought this lounge on a massive transport base. It can thus be in one piece with a special transport (because of excess width) delivered with easy set up.*

*The external dimensions are L x W x H = 716 x 325 x 290 cm.*

*We can imagine this high quality processed lounge as:*

- Mobile VIP Lounge
- Indoor meeting island
- Designer Pavilion
- Employee break room
- Lounge container
- Visitor meeting room
- Meeting room in a warehouse

*In any case, it is an eye-catcher and unique.*

*The complete unit is in very good condition. All technical data and documentation are available and can be forwarded now. We are happy to send you more pictures.*

*New price in 2013: >> 100,000 euros.*

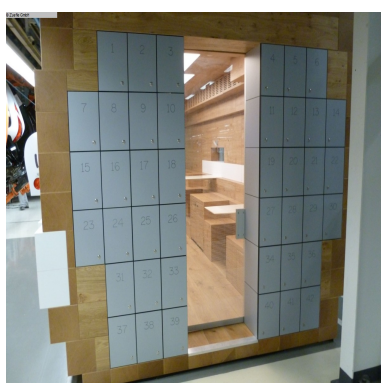
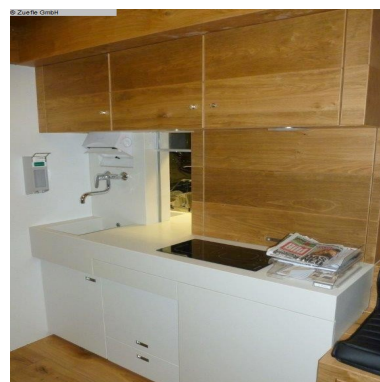
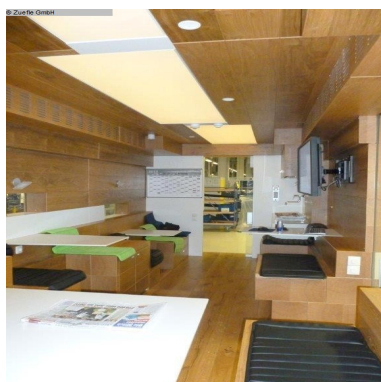
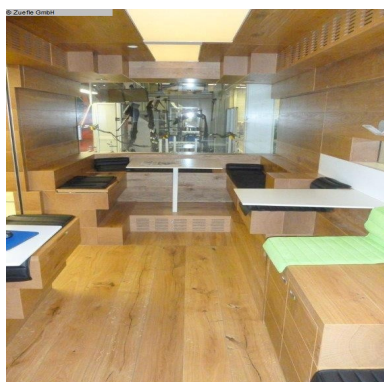
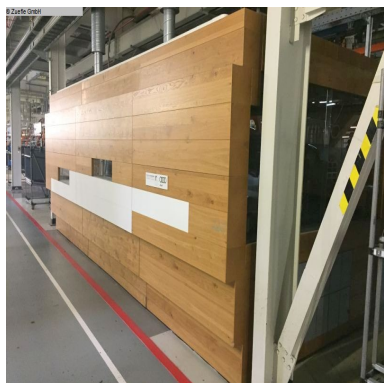
*Come for a visit, the staff lounge is still under construction in our warehouse in Giebelstadt near Würzburg (about 80min from FRANKFURT AIRPORT)*

## VIDEO-LINKS

## WEB-LINK

<http://mhp.logotech.de/hpm/v7/Datenblatt/datenblatt.php?machineno=1139-00297>

## MACHINE PICTURES



Container

Universitaet Rosenheim

Designer-Pavillon

Stock no. :1139-00297

